

SLAM1000

Handheld LiDAR Scanner



Shenzhen Feima Robotics Co., Ltd.
overseas@feimarobotics.com
www.feimarobotics.net

OVERVIEW

Feima Robotics' SLAM1000 handheld 3D LiDAR scanner delivers high-precision scanning with true-color rendering in a lightweight, cost-effective package. Using proprietary SLAM algorithms and a 12MP color camera, it generates detailed, colored point clouds ideal for accuracy-critical applications.

This entry-level solution combines professional performance with user-friendly operation at an accessible price. Perfect for surveying and reality capture, it ensures reliable results with streamlined workflows across various fields.

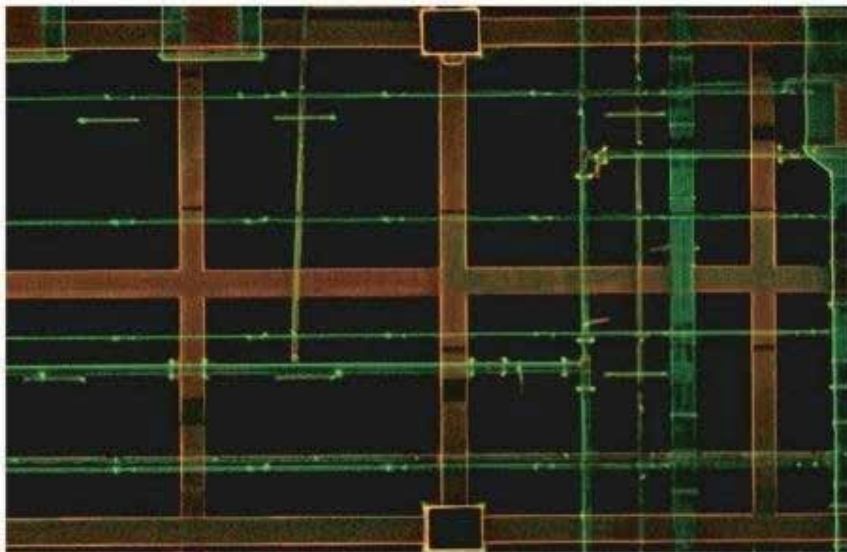


KEY FEATURES



High Precision Point Cloud

Equipped with a non-repetitive scanning laser and high-precision IMU, this system utilizes industrial-grade SLAM algorithms to generate high-precision point cloud results.



Colored Point Cloud

The 12MP panoramic camera generates high-definition colorized point clouds with more authentic and detailed color representation.



Real-time Mapping

It supports real-time point cloud acquisition.



MagSafe

Built-in MagSafe magnetic ring for more convenient phone mounting



External Panoramic Camera

It supports external panoramic cameras and 3D Gaussian Splatting generation.



Lightweight and Portable

Carrying case dimension: 189mm x 232mm x 115mm (smaller than A4 paper), ensuring greater portability.



SOFTWARE

SLAM GO POST Pro

- PC software embedded in the UAV manager;
- Handheld laser scanner data processing;
- Massive point cloud data rendering and browsing;
- Point cloud coloring, panoramic image generation, 3DGS generation;
- Breakpoint continuation scan;
- Aerial-ground data fusion, etc.

SLAM GO

- Mobile APP compatible with Android and iOS systems;
- Enable quick measurement and industry-specific measurement report generation;
- Real-time mapping, data viewing and browsing;
- CORS system setup and connection;



PARAMETERS



Mainbody

Weight	0.65 kg (Scanner) 1.16 kg (With battery and base)
Dimension	404 mm x 170mm x 188mm (With battery and base)
Power	18W
Storage	512G SSD
Lithium battery	SP30
Endurance	1.7h(single)
Operating temperature	-20°C ~ 50°C
Humidity	<95%
IP Grade	IP54

Camera

Camera Resolution	12 M pixel
FOV	210°
Photo Resolution	2704x2208

Result Accuracy

Relative Accuracy (RMSE)	2cm@100m
Point Cloud Thickness (noise)	1cm*

*Point cloud planar thickness within 50 m of the odometry center

Laser

Wavelength	905 nm
Laser class	Class 1
Range	0.1-70m
FOV	60°H, -7°~52°V
Point frequency	200 kpts/s
Frame rate	10Hz

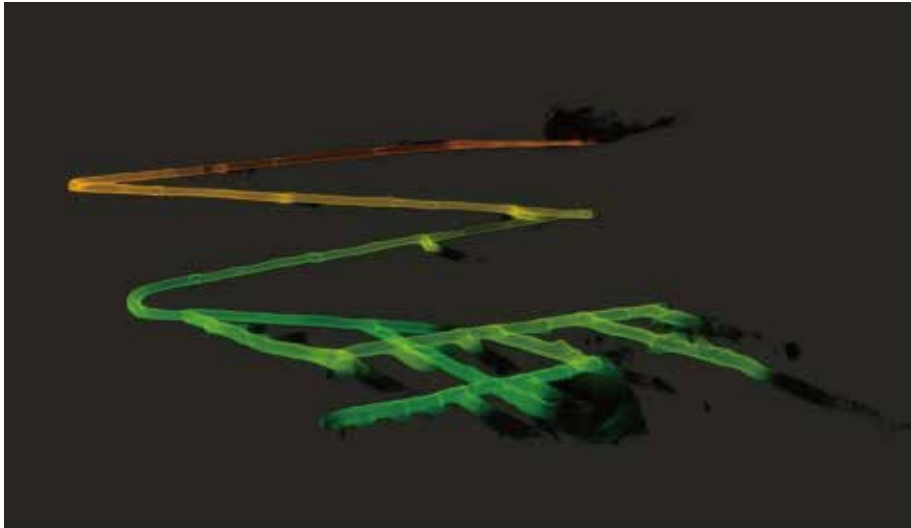
IMU

Bias Instability	3°/h (Allan Variance @25°C)
Angle Random Walk (ARW)	0.1°/√hr

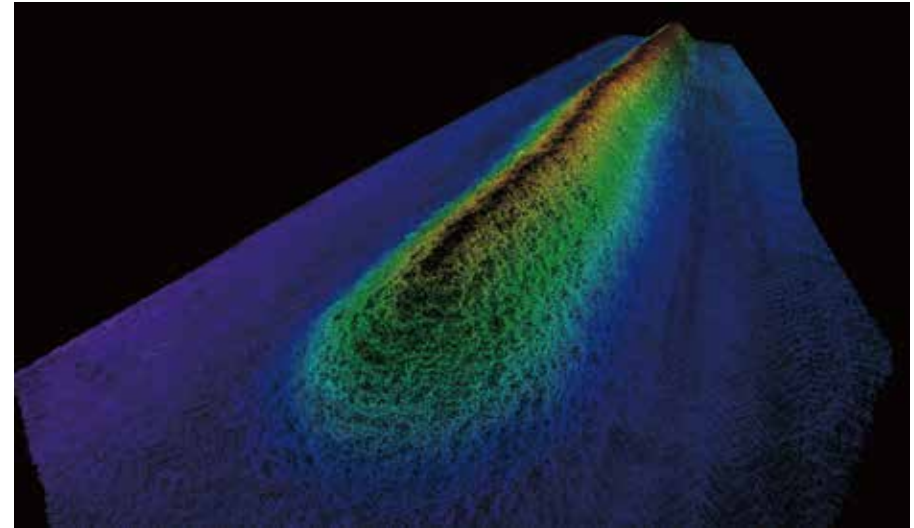
Connection

Type-C1	SSD Charge
Wi-Fi	Supported
Bluetooth	Supported

APPLICATION



Mining



Volume Measurement



Point Cloud Coloring



3DGS